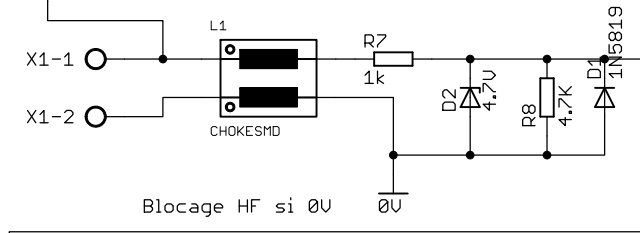
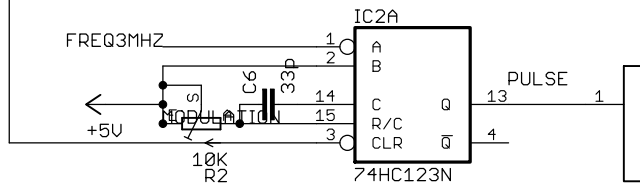


+5V  
1 2  
S1 ON  
Forgage émission (pour les tests)

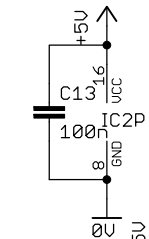
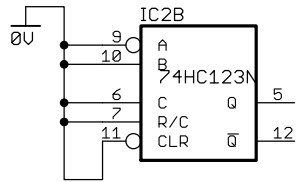
## Entrée modulation TTL



## Durée impulsion réglable



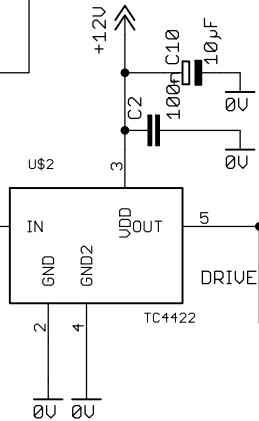
## Dual monostable



## Générateur 3MHz ajustable

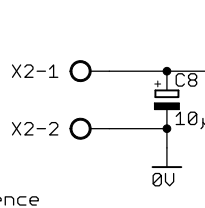
## MODULATION

Drivers TC4422 en T0220



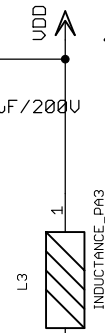
ZENER 13V 5W  
ZENER 13V 5W  
Protection du mosfet

+12 V/0.5A

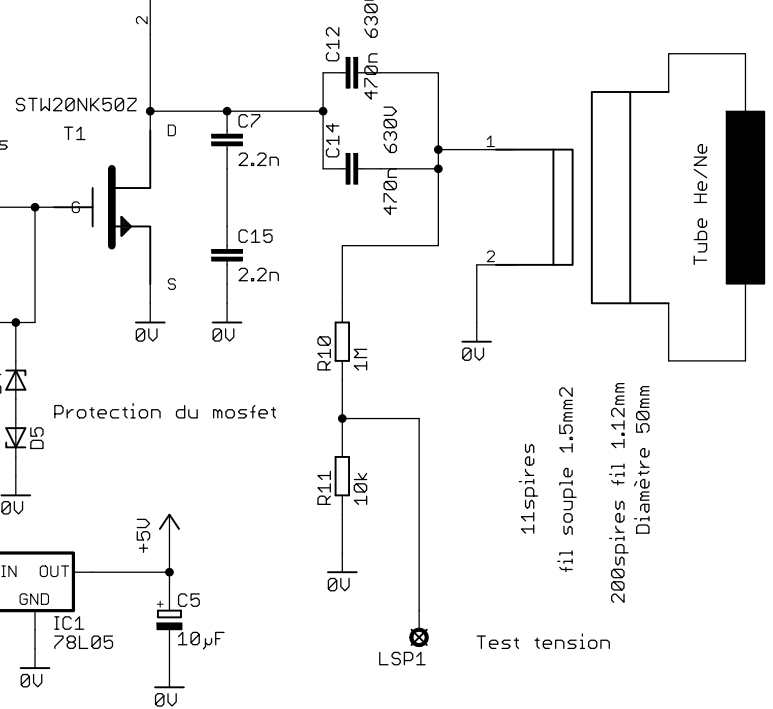


H1 H2 H3 H4  
MOUNT HOLES 3.0 HOLES 3.0 HOLES 3.0 HOLES 3.0

40 à 120V/3A



INDUCTANCE\_PA3  
3.3µH fil D1mm  
12 spires jointives D23mm  
longueur 13.3mm



Version alimentation directe en +12V

TITLE: plasma\_mosfets\_mono2

Document Number:

REV:

Date: 01/01/2022 21:13:54

Sheet: 1/1